

# Exploring Transportation

Play-based learning is a developmentally appropriate best-practice for young children. Through **Exploring Transportation**, students learn about the different types of transportation. From understanding what transportation is to exploring its various forms, this guide shares an array of ways that children can have fun learning about different types of transportation while enhancing their literacy skills. Follow these suggestions to create transportation-themed centers in your early childhood classroom.

## AIRPORT DRAMATIC PLAY CENTER

Dramatic play inspires imagination, develops speaking and listening skills, fosters social skills such as sharing and turn taking, and supports children to acquire new vocabulary. A dramatic play center should include a theme, props, and adult guidance to enhance language development. Also include environmental print such as signs, labels, and authentic writing opportunities.



### SUGGESTED PROPS

- Pilot dashboard
- Pilot uniform
- Flight attendant uniform
- Play suitcase and travel accessories
- Play food, drinks, etc.

### RIF PRINTABLES

- Airport banner
- Airport signs (arrivals, departures, gates, informational signs, etc.)
- Boarding pass
- Luggage tag
- Airplane menu
- Airplane safety card
- Airplane windows



**ADULT GUIDANCE:** Use these suggested leveled questions and narrations to support children's play.

- **Level 1:** "Point to the window inside of the airplane."
- **Level 2:** "How many passengers are on the plane today?"
- **Level 3:** "Why is the flight attendant holding a safety card?"
- **Level 4:** "What would happen if you forgot to put a luggage tag on your suitcase?"
- "You are putting luggage tags on all of the suitcases so that they don't get lost."
- "There is a little girl who is nervous to fly and you are making her feel calm."

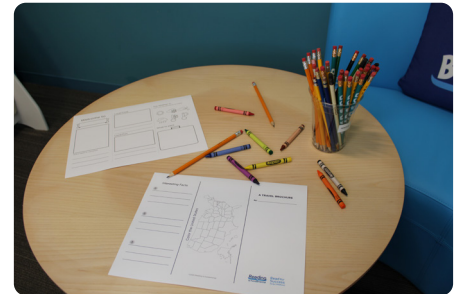
## WRITING CENTER

Young children benefit from exposure to different styles and purposes for writing. At your writing center include different types of paper and writing materials, a sound-spelling chart, and picture vocabulary cards. Help children see that writing has different purposes by providing examples of different types of writing such as friendly letters, storybooks, party invitations, and more.



### RIF PRINTABLES

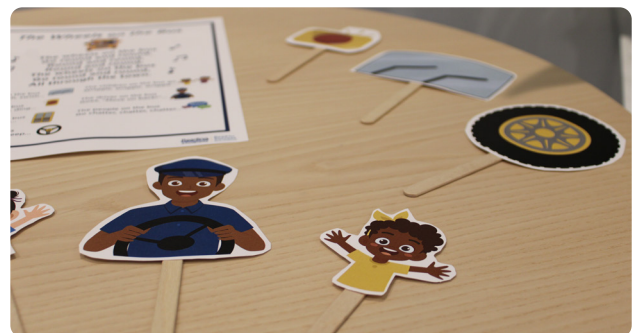
- Travel brochure
- Postcard
- Transportation border sheet (with and without lines)
- Traffic cone alphabet tracing



Sending a postcard is a wonderful way to make someone smile and let them know you're thinking of them while you are traveling! Write a postcard to a friend or family member. As a class, discuss some joyful messages you could include to make the person receiving the postcard feel appreciated. Have students practice writing their postcard using [RIF's Sound-Spelling Chart](#) and [Picture Vocabulary Cards](#).

## NURSERY RHYME CENTER

Singing nursery rhymes help children develop phonological awareness which is important for developing phonics. Set up a center for children to sing their favorite nursery rhymes. Include the nursery rhyme, hand-made or printed displays, and puppets or props related to the nursery rhyme.



### RIF PRINTABLES

- "Wheels on the Bus" nursery rhyme
- "Wheels on the Bus" puppets
- "Wheels on the Bus" Banner