

# Aunt Pearl

## RIF EXTENSION ACTIVITIES FOR EDUCATORS

INTERDISCIPLINARY THEMES: ART, MATH, SOCIAL EMOTIONAL LEARNING, SOCIAL STUDIES

### ART

#### COPYCAT MOSAIC

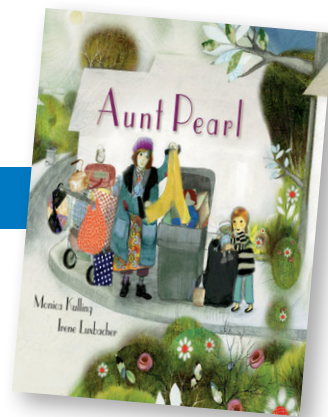
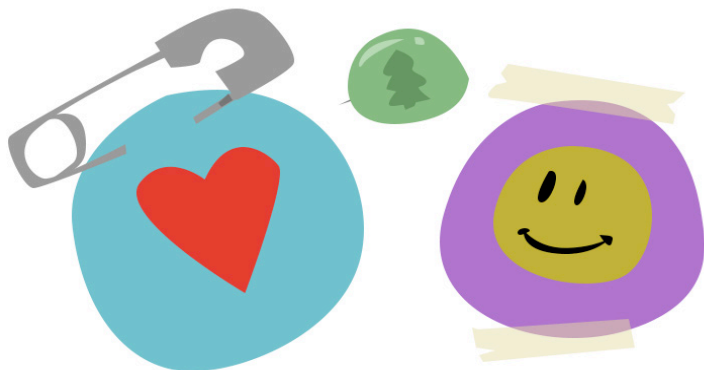
Tesserae can be freeing when it comes to creating pictures. Provide students with three images from the book: the little blue house, the table Aunt Pearl made, or the big tree Aunt Pearl stood under at the back of the book. Print or project the images and ask students to select one to reproduce using tesserae. Have students cut, arrange, and paste corresponding colored tesserae to recreate the image.



### ART, SOCIAL EMOTIONAL LEARNING

#### BUTTON MAKING

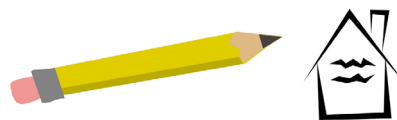
Aunt Pearl wore several buttons on her hat that expressed her strongly held beliefs. Have each student design a button to express a belief of their own. Start the activity with a discussion about core beliefs, whether serious or funny. Then, provide circles of paper and invite students to write or draw symbols to reflect their beliefs. If possible, use a button machine to create the buttons, or just tape or glue the “buttons” to paper, notebooks, tablets, etc.



### SOCIAL EMOTIONAL LEARNING

#### WHAT'S UNDER THAT ROOF?

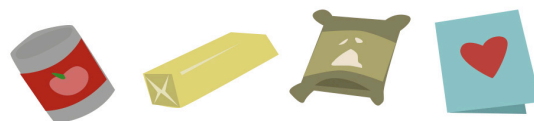
Sometimes people forget how many comforts are under the roof that is over their head. Have students draw an outline of a house and, inside the outline, write a list of all the things in that house that provide comfort. Encourage them to review their daily schedules or imagine each room in the house to jog memories of things inside their home: faucet, chair, refrigerator, coat hook/hanger, etc.



### SOCIAL STUDIES

#### SUPPORT FOR THOSE WITHOUT HOUSING IN YOUR COMMUNITY

Select an organization in your community, city, or state that provides support to people who are facing housing insecurity, such as a group that provides meals or clothing. Show students the organization's website or materials and talk about the steps they must take to help people. Consider supporting their mission with an appreciation card for the staff or a collection drive for the organization.



### MATH, SOCIAL STUDIES

#### HOUSING SOLUTIONS

Encourage your students to begin to imagine solutions to the practical challenges faced by people who lack housing, such as safety, comfort no matter the weather, and the ability to do laundry. Visit <https://www.lihihousing.org/villages> to take a look at some temporary housing solutions for people who live in Washington state. As appropriate, have students color tiny houses or work independently or in groups to tackle a tiny house math project.